

POWAY VALLEY RIDERS ASSOCIATION

TRACTOR/DRAW TRAINING GUIDE

John Deere 4520

DRAFT – March 2024

TRACTOR FEATURES

Start

Hand Brake

Clutch & Foot Brake

Range Selector & Gears

Foot & Hand Throttle

Forward & Reverse Shifter

4 WD

Front Loader Operation

3 Pt (Rear) Lift

3 Pt Auxiliary (Pitch, Tilt and Rippers)

TRACTOR OPERATION

Check Fluids – Walk Around

Starting

Select Range/Gear

TRACTOR AUXILIARY COMPONENTS

Front Fork Lift

Rear Gannon Box Scraper

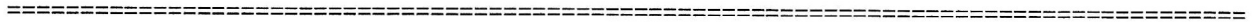
DRAG FEATURES

- Scarifiers
- Clod Rings
- Leveling Bar

DRAG ADJUSTMENTS AND OPERATION

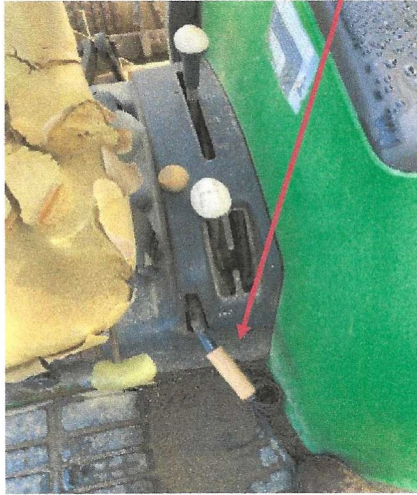
ARENA MAINTENANCE

Arena 1	2" (Polo) – 4" Barrells)
Arena 2	2" to 2 ½"
Dressage	2"
Warm Up	2 ½" – 3"
Turn Out	3"



TRACTOR FEATURES

Hand Brake
Up - On Down - Off



Clutch

Foot Brake



Forward - Reverse Shifter

Foot Throttle

F - N - R

Hand Throttle

Light Switch



PTO Engage

Clutch Pedal

Gear Selector

1-4

4WD

UP - 2WD

DOWN - 4WD



Range Selector

A - N - B - C

4 WD Indicator Light

Tachometer (RPM)

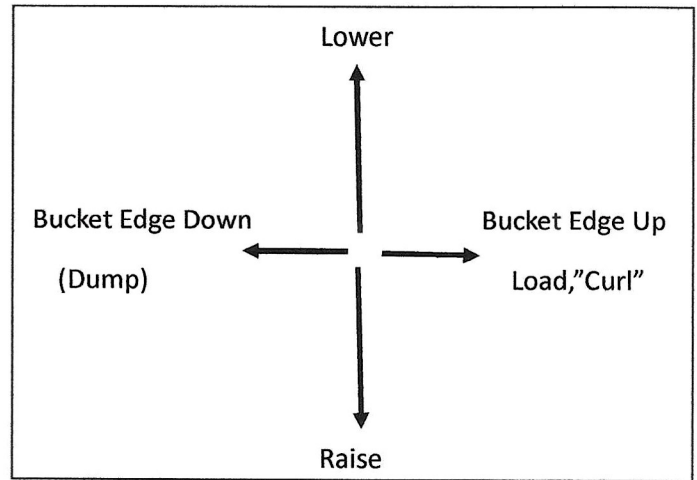


Fuel

Hours

Temperature

Loader Bucket Control



3 Pt. - Up and Down (Shown in Down Position)

Pull Back to Raise

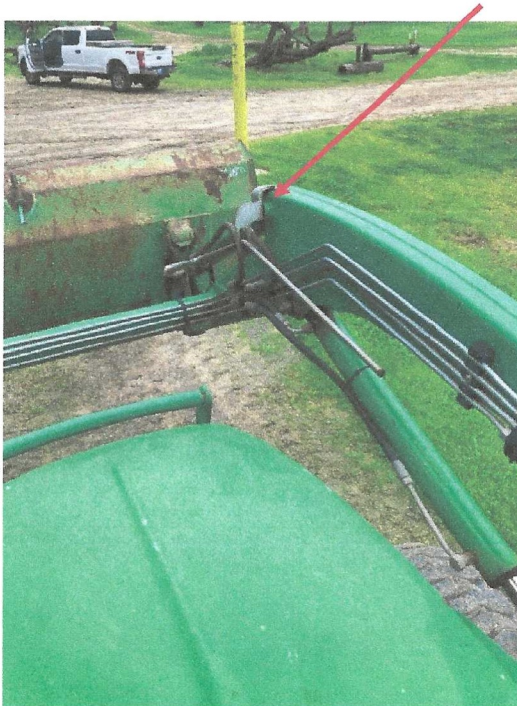
Loader Bucket Level Indicator

Shown In Down (Dump) Position



Loader Bucket Level Indicator

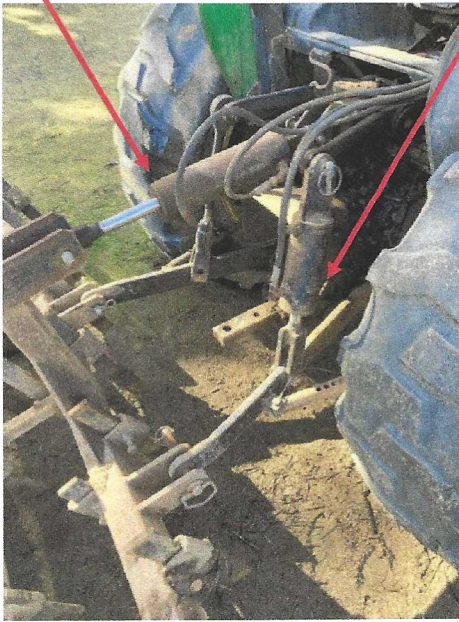
Shown In Bucket Level Position



3 Pt. Hitch

Pitch Cylinder

Tilt Cylinder



3 Pt. Hitch Controls

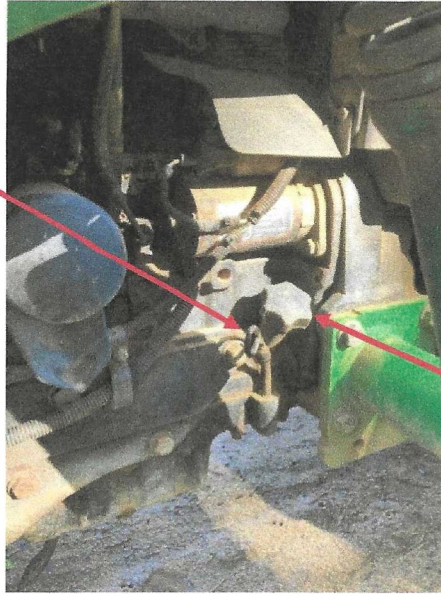
Tilt

Pitch



Ripper (Box Scraper Only)

Engine Oil
Dip Stick



Engine Oil
Fill

Hydraulic
Fill



Hydraulic
Dip Stick

Tractor Operation

Before starting the tractor, do a “walk around” and look for any obvious issues. Confirm that components are in proper alignment, nothing loose or hanging and no significant fluids are on the ground.

Starting The Tractor

- Hand Brake Set
- Forward-Reverse Shifter Neutral
- Key/Ignition/Start
- Select Range
- Select Gear
- Foot on Brake
- Raise 3Pt Hitch (Drag or Gannon)
- Raise Loader Bucket
- Release Hand Brake
- Forward – Reverse as needed

Clutch

Depressing the clutch disengages the Forward-Reverse Shifter, Gear and Range. It is not required to shift Range, Gears or engage/disengage 4 WD so long as you are at a full stop. It can be used when making an approach to something such as dumping the loader bucket in the dumpster.

Shifting Range or Gear

- Forward/Reverse Shifter in N
- Full Stop
- Shift Range/Gear as Needed

There are 4 Gears (1-4) within each Range (A,B,C). Range A is the lowest (slowest) and Range C is the highest (fastest). Range A, Gear 1 would be the lowest for maximum “pulling” while Range C, Gear 1-4 is for “roading” only. The majority of PVRA arena work is done in Range B, Gears 2-3.

4 WD

4 WD is available in all Range/Gears by pulling up on the lever and confirming the dash light indicator. It is preferred that the 4 WD only be used when in the arena with the drag. When exiting the arena, stop and put it in 2WD (lever down).

Foot – Hand Throttle

The foot throttle should be used the majority of the time. When dragging the arenas, once you have established your drag settings, the hand throttle can be used to complete the work. Do not exceed 2,000 rpm with the hand throttle. You must pull the hand throttle back if having to come to a stop. Use on the hand throttle is not recommended when working outside of the arenas.

Box (Gannon) Scraper with Rippers



Fork
Lift



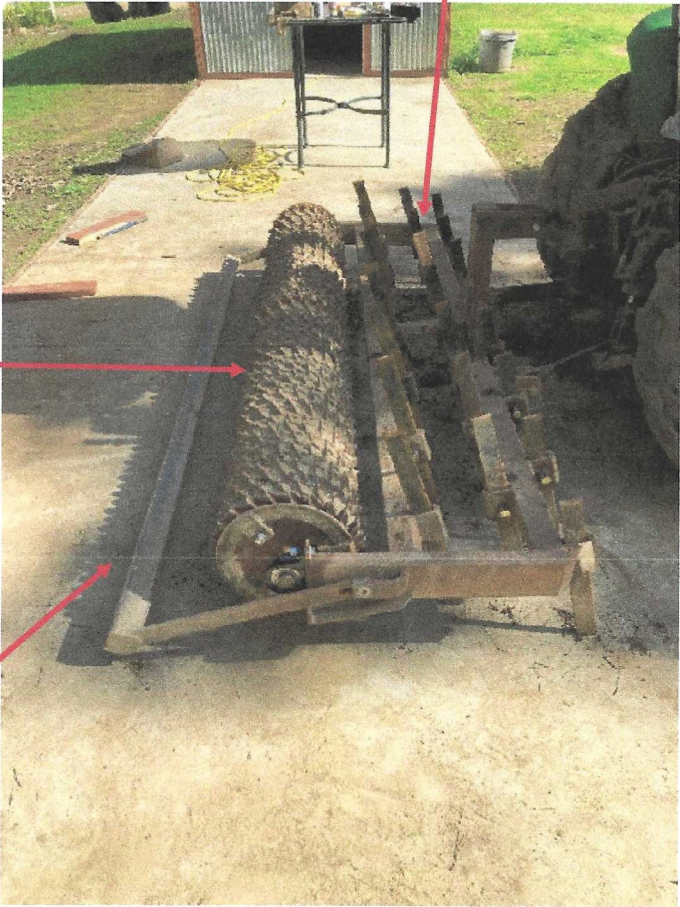
Roller

Drag Features

Scarifier Shanks

Clod Rings

Leveling Bar



Drag Operation



Drag Pitched Up



Drag Pitched Down

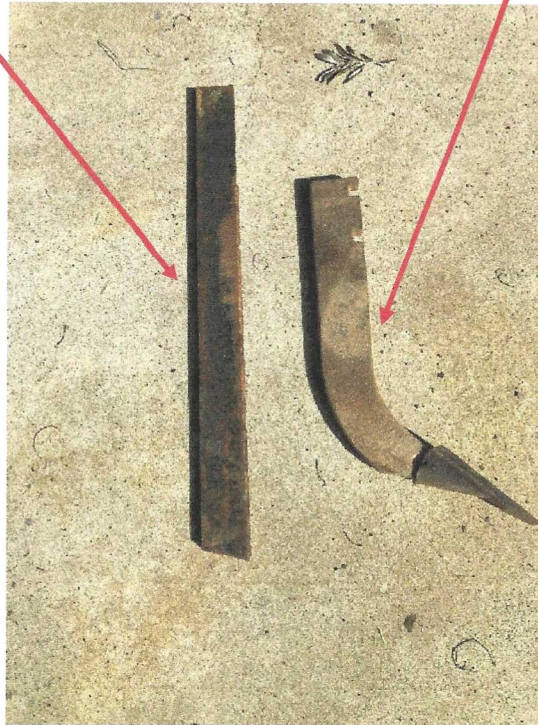


Left - Pitch Up

Right - (along rail) Pitch Down

Scarifier (Drag)

Ripper Shank with Tooth (Box Scraper/Gannon)



Ripper Shank with Fresh Tooth



Worn Tooth